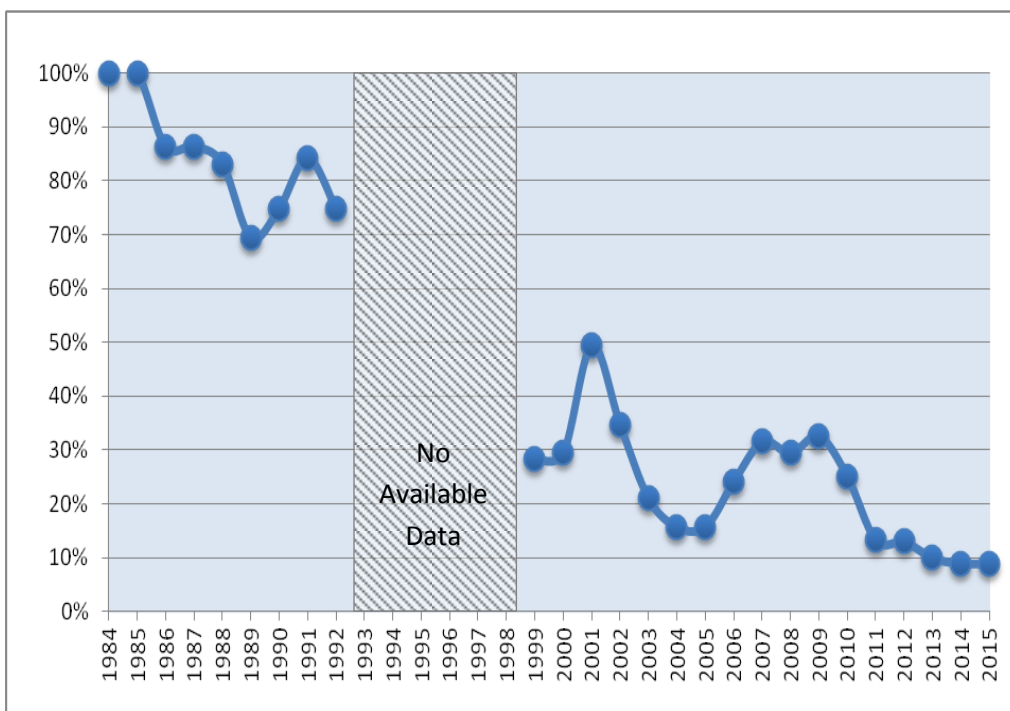
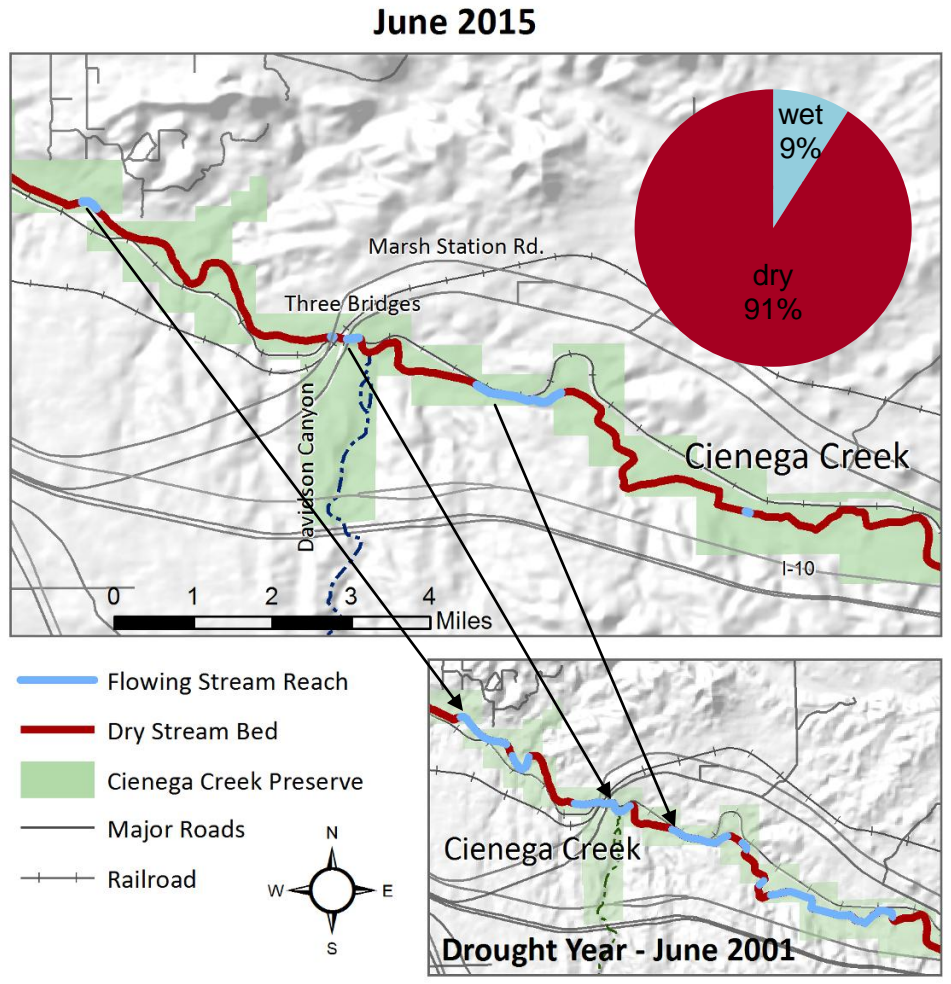


2015: Marginal Improvement in Record Breaking Drought Conditions

CIENEGA CREEK



Cienega Creek (above) and Davidson Spring (below) in September 2014.



The perennial flow extent was 0.88 miles in June 2015, a scant 106 ft increase over June 2014, which had the lowest flow extent on record. This is only 9% of the flow extent compared to the wet years in the mid-1980s when fully 9.5 miles flowed in the Preserve during the dry season. However, monitoring revealed a pause in the multi-year decline of several measures of aquatic and riparian ecosystem health.

*The flow extent is measured on a quarterly basis during the PAG walk-through of the Pima County Natural Preserve, from the I-10 overpass to the dam. May-July is the driest season in Arizona, making it the best time to estimate the minimum perennial streamflow.